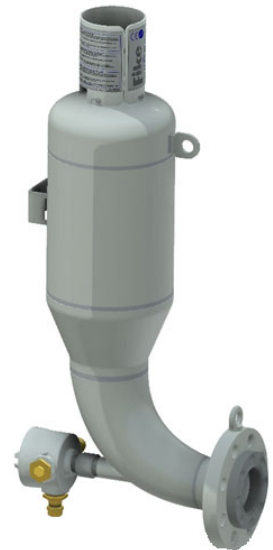


HRD SUPPRESSION CONTAINER ASSEMBLY**DESCRIPTION**

Upon receipt of an activation signal from the Fike EPACO™ explosion protection system, the high rate discharge (HRD) container assembly discharges explosion suppressant powder into the protected volume. The powder chemically extinguishes the combustion reaction preventing pressure increase beyond a predetermined limit.

FEATURES AND BENEFITS

- Extremely fast response time
- Very low system maintenance costs
- Virtually maintenance free
- Easy servicing
- Wide selection of HRD container assemblies for protection of large and small volumes
- Wide variety of system components and extinguishing agents





SPECIFICATIONS

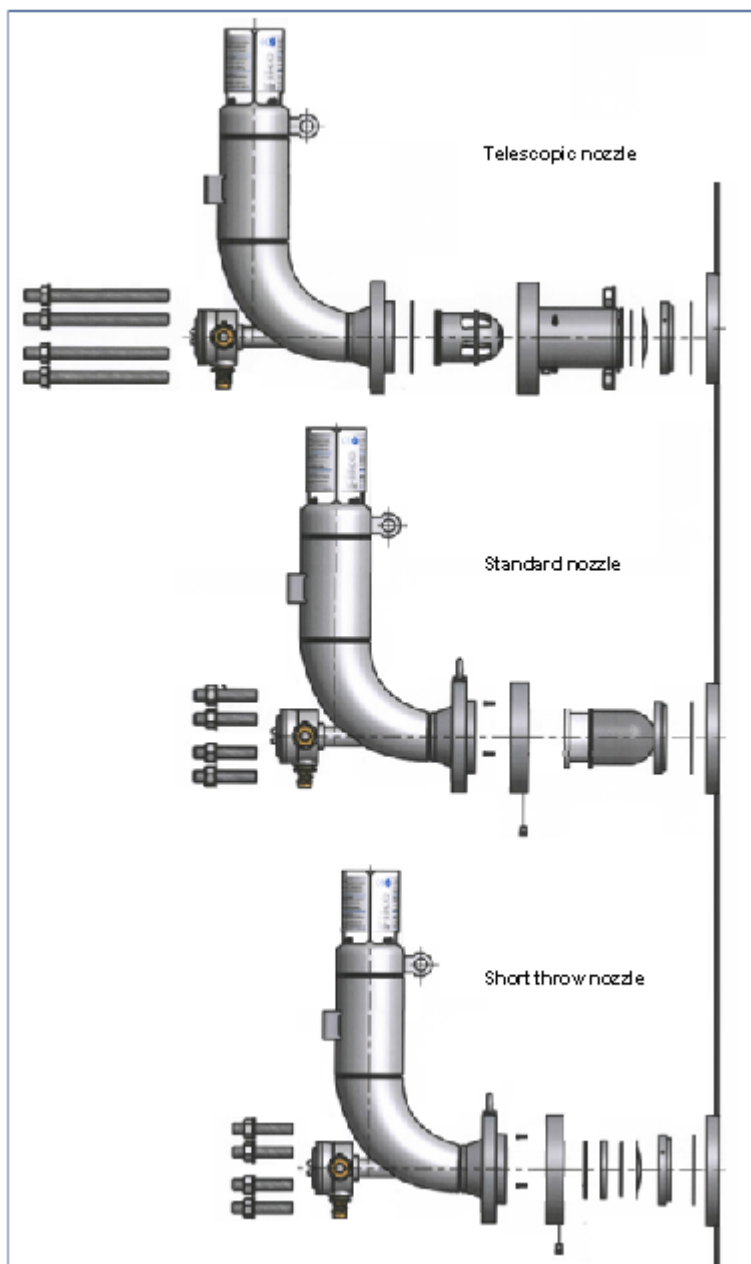
| Type | HRD (High Rate Discharge Suppression Container Assembly) | |
|--|---|---|
| Executions | 4": 2.5L; 5L; 10L; 20L; 30L 6": 50L | |
| Spreader Types | 4" Standard spreader with neoprene cover | P/N 45012500-S |
| | Telescopic spreader with 1.4401 (316 SST) cover | P/N 45019500-S |
| | Short throw spreader with 1.4401 (316 SST) cover | P/N 45022831-S |
| | 6" Standard spreader with neoprene cover | P/N 45012200-S |
| Spreader Wetted Parts | Telescopic spreader with 1.4401 (316 SST) cover | P/N 45011200-S |
| | Standard spreader | 1.4404 (316L SST) / Neoprene / Silicone |
| | Telescopic spreader | 1.4404 (316L SST) / 1.4301 (304 SST) / Silicone |
| | Short throw spreader | 1.4404 (316L SST) / 1.4301 (304 SST) / Silicone |
| Process Connection | Weld-in 1.4404 (316L SST) or CS flange / Weldless 1.4404 (316L SST) flange | |
| Extinguishing agent | Sodium Bicarbonate (SBC) Dessikarb (Food Grade Quality Sodium Bicarbonate) Mono Ammonium Phosphate (MAP) | |
| Explosion Hazard | Combustible dusts (incl. St 3), gases and hybrid mixtures | |
| Initiator | Valve Actuator Assembly – GCA | |
| Maximum Operating Temperature ¹ | 120°C (Standard spreader) 200°C (Telescopic spreader) | |
| Ambient Temperature ¹ | -20°C to +50°C | |
| Fill Pressure (N ₂) | 62 barg at 22°C | |
| Ex marking | ATEX II 2/1 GD EEx d IIC T6 / IP66 T85°C | |
| Painting Specifications | Standard: • C4 grade coating - KTL layer with powder coating ISO 12944-5; ISO 12944-6 A4.09 Optional: • C5-I: ISO 12944-5; ISO 12944-6 A5I.02 • C5-M: ISO 12944-5; ISO 12944-6 A5M.04 | |
| Material Specifications | Container: Carbon steel Initiator Housing: SST Pressure Gauge: SST Junction box: Aluminum | |

(1) Consult Fike for other temperature requirements.

ACCESSORIES

- Low pressure monitoring system. Please see datasheet X.2.78.01-X

- Mechanical lockout. Please see datasheet X.2.79.01-X





DATA SHEET