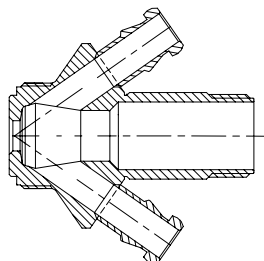
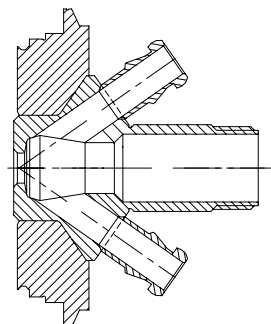


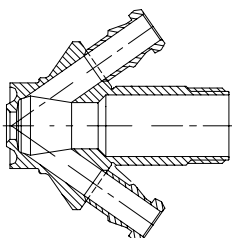
Valve body Type S
Item no.: 850031



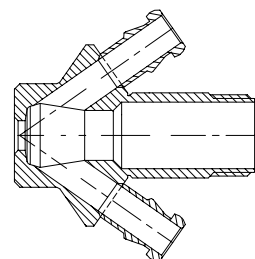
Valve body Type V
Item no.: 850009



Valve body Type P
Item no.: 850011



Valve body Type T
Item no.: 850001



Available with:



Silicone membrane
Item no.: 600051
See 600042

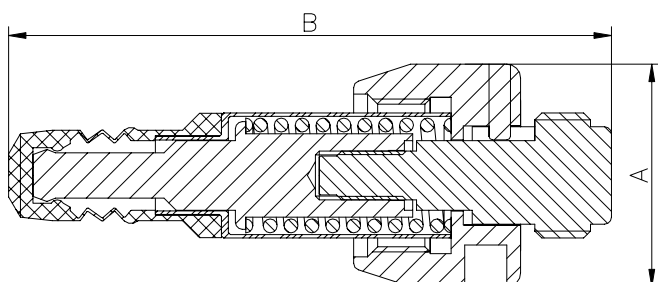
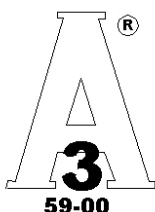
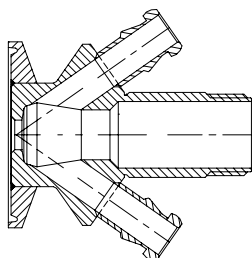


EPDM membrane
Item no.: 600052
See 600042



PTFE membrane
Item no.: 850055

Valve body Type C
Item no.: 850021



Where to use :	W9 valve bodies	
How to use:	Manually operated	
Installation:	Screwed in Valve body	
Material:		
Steel Parts:	AISI 304 / 316 / 316L(1.4404)	
Membrane	FDA approved PTFE	
Knob:	Key ring (600076)	
Key measurements		
Drawing part A:	32 mm.	1.26 In.
Drawing part B:	87 mm.	3.43 In.
Net weight:	0.24 kg./pc	0.53 lb
Temp. range:	1 ⁰ C - 150 ⁰ C	34°F - 302°F
Product pressure range:	0 - 6 bar(g)	0 - 87 psi(g)
Key-ring not included. (600076)		