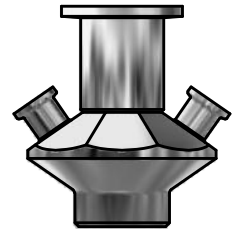


# VALVE BODY W15 TYPE T MINI TRI-CLAMP

ART. NO. 860001

## GENERAL

- The KEOFIT CLASSIC W15 Sampling Valve is designed for high viscosity sampling such as fruit pulp etc.. Design based on the original KEOFIT and based on one-piece-construction. Unique serial no. for each valve\*.
- The sampling valve can be used for any process sampling for microbiological, chemical and/or physical analysis.
- Cleaning/sterilizing: Between batches: Valve in open position: Cleanable by means of CIP using the detergent solution suitable for the actual process media. Between samples: Valve in its normal closed position: cleanable by CIP as "Between batches" or the valve may be sterilized by means of steam SIP or chemical SIP using a procedure appropriate to the actual circumstances. For further advice, please contact Keofitt.
- Designed for sampling of liquids with a viscosity of up to approx. 50.000 cP containing no particles larger than Ø8 mm. Sampling of more viscous liquids is possible, only will it take longer (depending on process pressure).



## FEATURES

- Installation: Tank welding
- Operation: Depending on choice of valve head
- Inlet / Outlet: 3/4" Clamp DIN 32676:2009-05 Table 4 Row C
- Membrane: Depending on choice of valve head

## CERTIFICATION\*

- EU EC 1935/2004 · EU EC 2023/2006 · DK No. 1248 10/2018 · 3.1 Material Certificate · Ra Certificate
- ATEX 2014/34/EU · PED 2014/68/EU · Keofitt DoC

## TECHNICAL DATA

### Material (process contact)

- Steel parts AISI 316L (1.4404)

### Material (without process contact)

- Steel parts AISI 304 (1.4304)

### Surface Treatment

- Outside Electropolished  $Ra \leq 1.2 \mu m$
- Inside (wetted surface) Electropolished  $Ra \leq 0.5 \mu m$
- Process connection Electropolished  $Ra \leq 0.5 \mu m$

### Pressure & Temperature

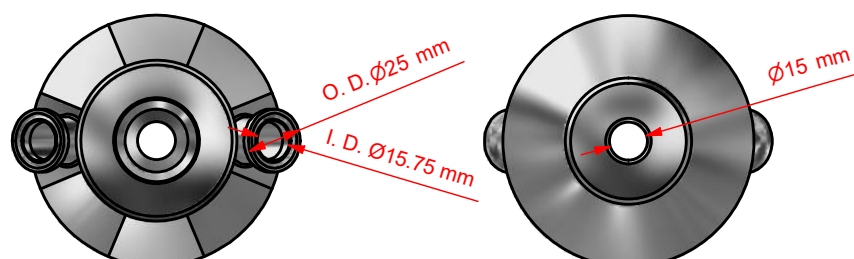
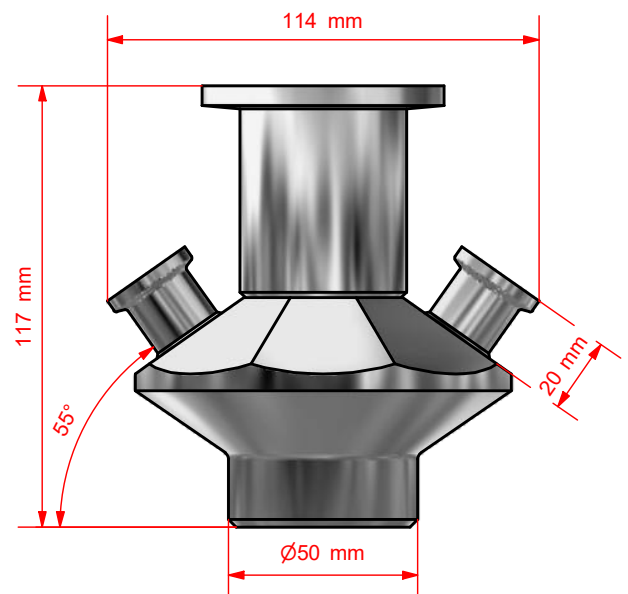
- Pressure Depending on choice of valve head
- Temperature Depending on choice of valve head
- Air supply Depending on choice of valve head

### Net Weight

- kg/lbs 1.87 kg/4.119 lbs

### Spareparts

- NOT APPLICABLE




\*For further information and download please visit [www.keofitt.dk](http://www.keofitt.dk)

KEOFITT CLASSIC W15 SAMPLING VALVE - HEADS

W15 HEADS		PTFE	
TYPE H TURN KNOB 0-10 BAR (G)	TYPE B NO SPRING 0-12 BAR (G)	 865541	 865547

-42-



TYPE N PNEUMATIC 0-10 BAR (G)	 865544
-------------------------------------	---

-43-

