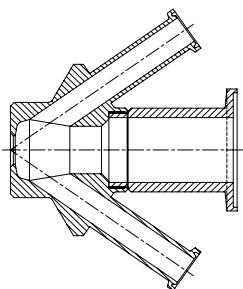
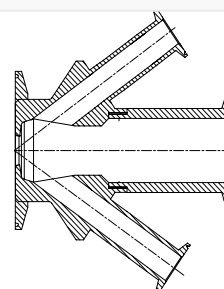


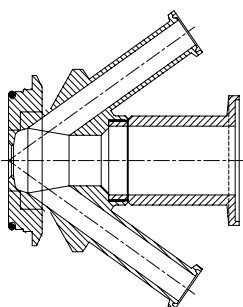
Valve body W 15 Type T
Item no.: 860001



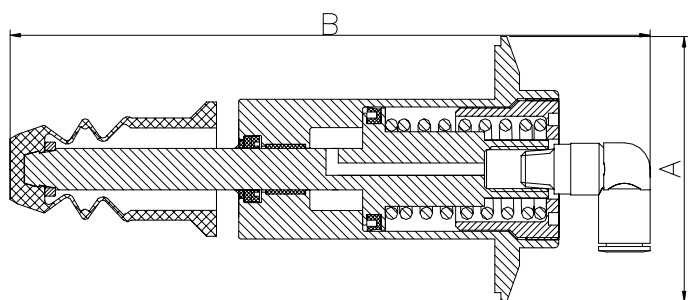
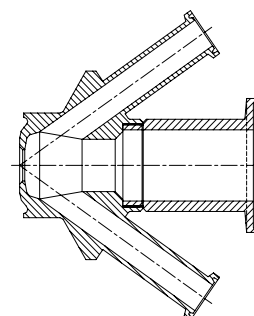
Valve body W 15 type C 3"
Item no.: 860003



Valve body W 15 Varivent ø68
Item no.: 860009



Valve body W 15 type P
Item no.: 860011



Where to use :

How to use:

Installation:

Material:

Steel Parts:

Membrane

O-rings and other

Key measurements

Drawing part A:

Drawing part B:

Net weight:

Temp. range:

Product pressure range:

Air supply pressure range:

With Valves bodies W15

Pneumatically operated

Fastened in Valve body with clamp

AISI 302 / 304 / 316L(1.4404)

FDA approved PTFE

NBR and PTFE

64 mm. 2.52 In.

155 mm. 6.11 In.

0.6 kg./pc 1.32 lb

1⁰ C - 150⁰ C 34⁰ F - 302⁰ F

0 - 6 bar(g) 0 - 87 psi(g)

6 - 7 bar(g) 73 - 101 psi(g)