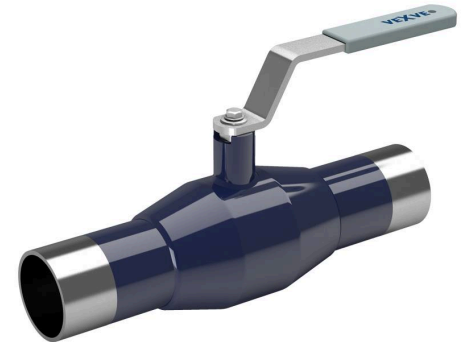


Steel ball valves, reduced bore

100 series, welding / welding, EN (DIN), DN 10-250, reduced bore

Body	DN 10-250 Steel, P235GH (1.0345)
Ball	DN 10-250 Stainless steel, X5CrNi18-10 (1.4301)
Ball seal	DN 10-250 PTFE+C
Stem	DN 10-250 Stainless steel, X8CrNiS18-9 (1.4305)
Stem seal	DN 10-250 FPM
Operation	DN 10-250 With zinc-plated steel handle



Operation conditions

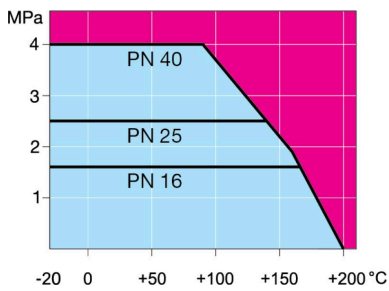
-20 °C – +200 °C

DN 10–500: Below -20 °C contact manufacturer

DN 600–800: Below 0 °C contact manufacturer

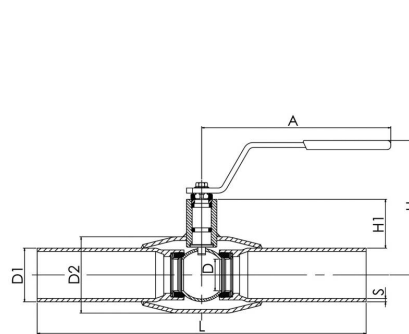
Lowest allowed ambient temperature -40 °C

Leakage rate A (EN 12266-1)

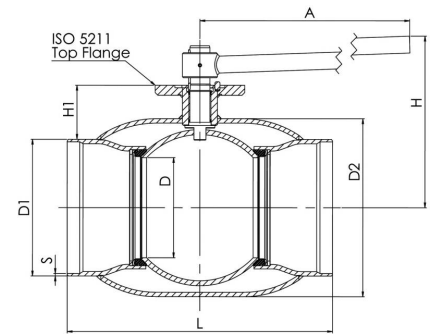


Not for steam

DN 10-150



DN 200-250



DN	PN	Product no.	A	D	D1	D2	H	H1	L	S	kg
10	40	100010	145	10	17.2	33.7	98	22	230	2	0.7
15	40	100015	145	10	21.3	33.7	98	22	230	2	0.6
20	40	100020	145	15	26.9	42.4	103	23	230	2,3	0.8
25	40	100025	145	20	33.7	48.3	118	34	230	2,6	1.0
32	40	100032	145	25	42.4	60.3	121	33	260	2,6	1.4
40	40	100040	188	32	48.3	70.0	120	43	260	2,6	1.7
50	40	100050	188	40	60.3	88.9	127	44	300	2,9	2.6
65	25	100065	277,5	50	76.1	101.6	159	62	300	2,9	4.0
80	25	100080	277,5	65	88.9	121.0	171	68	300	3,2	5.4
100	25	100100	278,5	80	114.3	146.0	218	101	325	3,6	8.4
125	25	100125	400	100	139.7	177.8	252	101	325	4	13.0
150	25	100150	600	125	168.3	219.1	272	107	350	4,5	18.0
200	25	100200	870	150	219.1	273.0	280	92	400	4,5	38.0
250	25	100250	1200	200	273.0	355.6	350	108	530	5	74.0

*DN 700–800 also available in PN40.

For more information contact our customer service.

Steel ball valves, reduced bore

100 series, welding / welding, EN (DIN), DN 300-600, reduced bore

Body	DN 300-500 Steel, P235GH (1.0345) DN 600 Steel, P355 NL1 (1.0566)/ GP240GH (1.0619)
Ball	DN 300-600 Stainless steel, X5CrNi18-10 (1.4301)
Ball seal	DN 300-600 PTFE+C
Stem	DN 300-600 Stainless steel, X8CrNiS18-9 (1.4305)
Stem seal	DN 300-600 FPM
Operation	DN 300-600 Valves are available with manual gear or with an electric or hydraulic actuator



Operation conditions

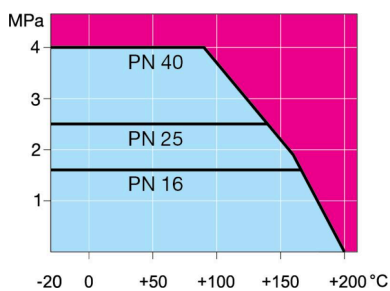
-20 °C – +200 °C

DN 10–500: Below -20 °C contact manufacturer

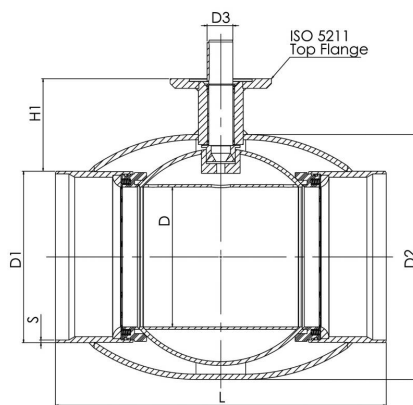
DN 600–800: Below 0 °C contact manufacturer

Lowest allowed ambient temperature -40 °C

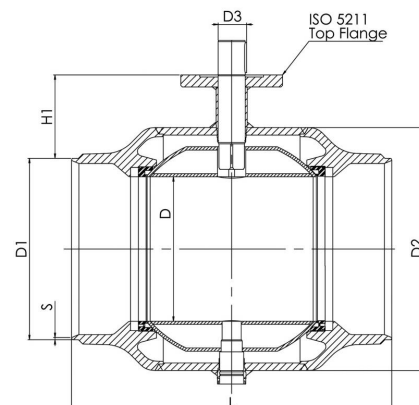
Leakage rate A (EN 12266-1)



DN 300-500



DN 600



DN	PN	Product no.	D	D1	D2	D3	H1	L	S	kg
300	25	100300	250	323.9	457.0	50.0	133	550	5.6	110.0
350	25	100350	290	355.6	508.0	50.0	192	686	6,3	170.0
400	25	100400	340	406.4	610.0	70.0	242	762	7,0	250.0
500	25	100500	390	508.0	660.0	90.0	259	914	7,0	400.0
600	25	100600	489	610.0	813.0	90.0	274	1065	7.1	997.0

*DN 700-800 also available in PN40.

For more information contact our customer service.

Steel ball valves, reduced bore

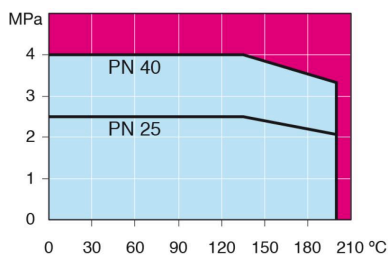
100 series, welding / welding, EN (DIN), DN 700-800, reduced bore

Body	DN 700-800 Steel, P355 NL1 (1.0566)/ GP240GH (1.0619)
Ball	DN 700-800 Steel + stainless plating, ASTM A350 LF2 +Ni
Ball seal	DN 700-800 PTFE+C
Stem	DN 700-800 Stainless steel, X8CrNiS18-9 (1.4305)
Stem seal	DN 700-800 FPM
Operation	DN 700-800 Valves are available with manual gear or with an electric or hydraulic actuator
Equipment	DN 700-800 are equipped with drain valve, mounting stand, lifting lugs



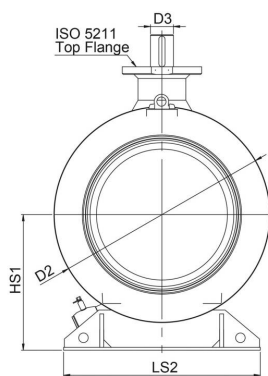
Operation conditions

-20 °C – +200 °C
 DN 10–500: Below -20 °C contact manufacturer
 DN 600–800: Below 0 °C contact manufacturer
 Lowest allowed ambient temperature -40 °C
 Leakage rate A (EN 12266-1)

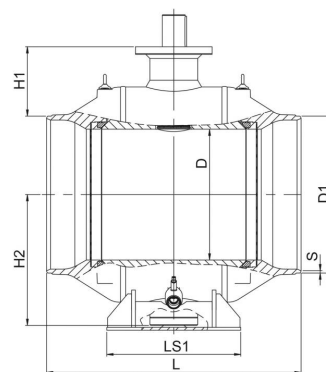


Not for steam

DN 700-800



DN 700-800



DN	PN	Product no.	D	D1	D2	D3	H1	H2	HS1	L	LS1	LS2	S	kg
700	25	100700	589	711.0	965.0	100.0	336	592	616	1205	560	965	8	2500.0
800	25	100800	684	813.0	1125.0	120.0	365	684	709	1330	700	1028	8.8	3650.0

*DN 700–800 also available in PN40.

For more information contact our customer service.