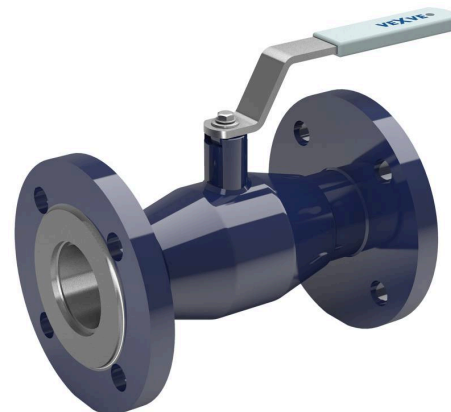


Steel ball valves, reduced bore

103 series, flange / flange, DN 15-250, reduced bore

| | |
|-----------|---|
| Body | DN 15-250 Steel, P235GH (1.0345) |
| Ball | DN 15-250 Stainless steel, X5CrNi18-10 (1.4301) |
| Ball seal | DN 15-250 PTFE+C |
| Stem | DN 15-250 Stainless steel, X8CrNiS18-9 (1.4305) |
| Stem seal | DN 15-250 FPM |
| Operation | DN 15-250 With zinc-plated steel handle |
| Flanges | EN 1092-1 Available PN 10, 16, 25, 40 |



Operation conditions

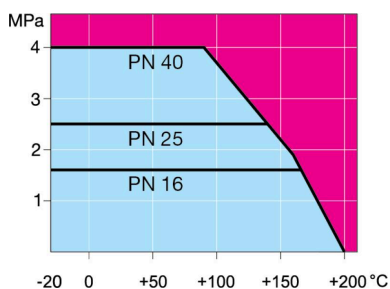
-20 °C – +200 °C

DN 10–500: Below -20 °C contact manufacturer

DN 600–800: Below 0 °C contact manufacturer

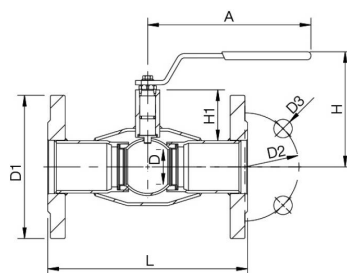
Lowest allowed ambient temperature -40 °C

Leakage rate A (EN 12266-1)

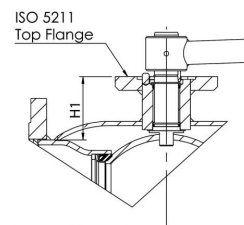


Not for steam

DN 15-150



DN 200-250



| DN | PN | Product no. | A | D | D1 | D2 | D3 | H | H1 | L | kg |
|-----|----|-------------|-------|-----|-------|-------|------|-----|-----|-----|-------|
| 15 | 40 | 103015 | 145 | 10 | 95.0 | 65.0 | 14.0 | 98 | 22 | 130 | 1.8 |
| 20 | 40 | 103020 | 145 | 15 | 105.0 | 75.0 | 14.0 | 103 | 23 | 150 | 2.5 |
| 25 | 40 | 103025 | 145 | 20 | 115.0 | 85.0 | 14.0 | 118 | 34 | 160 | 3.3 |
| 32 | 40 | 103032 | 145 | 25 | 140.0 | 100.0 | 18.0 | 121 | 33 | 180 | 5.0 |
| 40 | 40 | 103040 | 188 | 32 | 150.0 | 110.0 | 18.0 | 120 | 43 | 200 | 5.8 |
| 50 | 40 | 103050 | 188 | 40 | 165.0 | 125.0 | 18.0 | 127 | 44 | 230 | 7.8 |
| 65 | 16 | 103065 | 277,5 | 50 | 185.0 | 145.0 | 18.0 | 159 | 62 | 270 | 10.5 |
| 80 | 16 | 103080 | 277,5 | 65 | 200.0 | 160.0 | 18.0 | 171 | 68 | 280 | 12.5 |
| 100 | 16 | 103100 | 278,5 | 80 | 220.0 | 180.0 | 18.0 | 218 | 101 | 300 | 17.0 |
| 125 | 16 | 103125 | 400 | 100 | 250.0 | 210.0 | 18.0 | 252 | 101 | 325 | 25.0 |
| 150 | 16 | 103150 | 600 | 125 | 285.0 | 240.0 | 22.0 | 272 | 107 | 350 | 33.0 |
| 200 | 16 | 103200 | 870 | 150 | 340.0 | 295.0 | 22.0 | 280 | 92 | 400 | 58.0 |
| 250 | 16 | 103250 | 1200 | 200 | 405.0 | 355.0 | 26.0 | 350 | 108 | 500 | 102.0 |

Steel ball valves, reduced bore

103 series, flange / flange, DN 300-600, reduced bore

| | |
|-----------|--|
| Body | DN 300-500 Steel, P235GH (1.0345) DN 600 Steel, P355 NL1 (1.0566)/ GP240GH (1.0619) |
| Ball | DN 300-600 Stainless steel, X5CrNi18-10 (1.4301) |
| Ball seal | DN 300-600 PTFE+C |
| Stem | DN 300-600 Stainless steel, X8CrNiS18-9 (1.4305) |
| Stem seal | DN 300-600 FPM |
| Operation | DN 300-600 Valves are available with manual gear or with an electric or hydraulic actuator |
| Flanges | EN 1092-1 Available PN 10, 16, 25, 40 |



Operation conditions

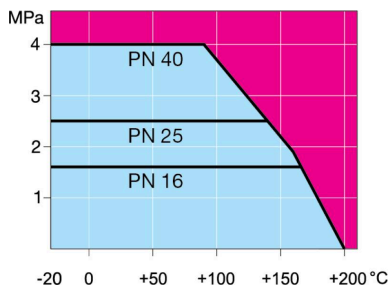
-20 °C – +200 °C

DN 10–500: Below -20 °C contact manufacturer

DN 600–800: Below 0 °C contact manufacturer

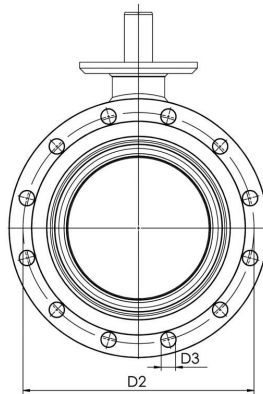
Lowest allowed ambient temperature -40 °C

Leakage rate A (EN 12266-1)

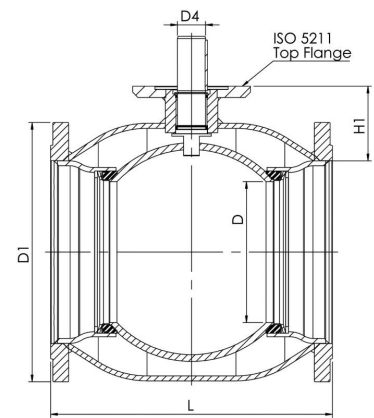


Not for steam

DN 300-600



DN 300-600



| DN | PN | Product no. | D | D1 | D2 | D3 | D4 | H1 | L | kg |
|-----|----|-------------|-----|-------|-------|------|------|-----|------|--------|
| 300 | 16 | 103300 | 250 | 460.0 | 410.0 | 26.0 | 50.0 | 133 | 500 | 148.0 |
| 350 | 16 | 103350 | 290 | 520.0 | 470.0 | 26.0 | 50.0 | 192 | 706 | 226.0 |
| 400 | 16 | 103400 | 340 | 580.0 | 525.0 | 30.0 | 70.0 | 242 | 810 | 322.0 |
| 500 | 16 | 103500 | 390 | 715.0 | 650.0 | 33.0 | 90.0 | 259 | 978 | 528.0 |
| 600 | 16 | 103600 | 489 | 840.0 | 770.0 | 36.0 | 90.0 | 274 | 1130 | 1144.0 |

Steel ball valves, reduced bore

103 series, flange / flange, DN 700-800, reduced bore

| | |
|-----------|--|
| Body | DN 700-800 Steel, P355 NL1 (1.0566)/ GP240GH (1.0619) |
| Ball | DN 700-800 Steel + stainless plating, ASTM A350 LF2 +Ni |
| Ball seal | DN 700-800 PTFE+C |
| Stem | DN 700-800 Stainless steel, X8CrNiS18-9 (1.4305) |
| Stem seal | DN 700-800 FPM |
| Operation | DN 700-800 Valves are available with manual gear or with an electric or hydraulic actuator |
| Flanges | EN 1092-1 Available PN 10, 16, 25, 40 |
| Equipment | DN 700-800 are equipped with drain valve, mounting stand, lifting lugs |



Operation conditions

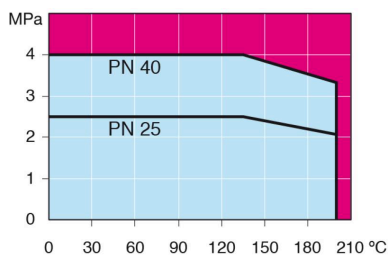
-20 °C – +200 °C

DN 10–500: Below -20 °C contact manufacturer

DN 600–800: Below 0 °C contact manufacturer

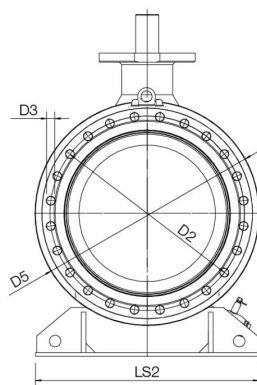
Lowest allowed ambient temperature -40 °C

Leakage rate A (EN 12266-1)

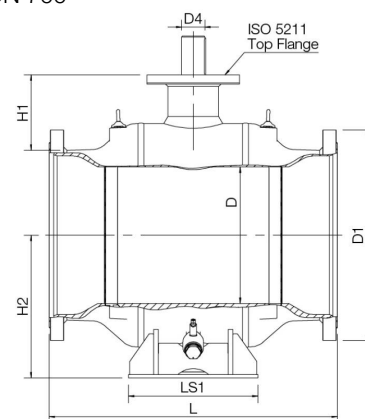


Not for steam

DN 700



DN 700



| DN | PN | Product no. | D | D1 | D2 | D3 | D4 | D5 | H1 | H2 | L | L1 | LS1 | kg |
|-----|----|-------------|-----|--------|-------|------|-------|--------|-----|-----|------|-----|------|--------|
| 700 | 16 | 103700 | 589 | 910.0 | 840.0 | 36.0 | 120.0 | 965.0 | 325 | 616 | 1245 | 560 | 965 | 2800.0 |
| 800 | 16 | 103800 | 684 | 1025.0 | 950.0 | 39.0 | 140.0 | 1125.0 | 358 | 694 | 1385 | 700 | 1028 | 4200.0 |