



Atomac & Durco fully lined process valves and accessories

Designed and produced by the latest technologies



Experience In Motion

AKH2.2 Lined Ball Valve*



The Atomac full port AKH2.2 lined ball valve has the same characteristics as the AKH2 however the AKH2.2 offers enhanced features to improve suitability for toxic and corrosive applications.

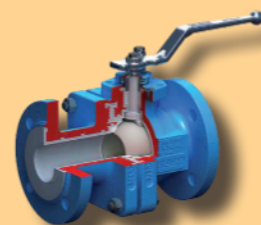
The AKH2.2 design features a static and dynamic middle flange seal and in comparison with the AKH2 the metal-to-metal body joint which protects this seal.

The metal-to-metal body joint absorbs destructive pipe vibrations and distortions so that there will be no negative effects on the sealing performance. Thermal cycling does not require retightening of the bolts anymore.

The packing is constantly preloaded through a set of belleville washers retained within a top cap. The packing is maintenance free and meets environmental standards such as TA Luft. The top cap also provides the actuator mounting platform per ISO 5211.

Seats have a larger diameter and therefore create less flow turbulences across the seat area and the integral retention lip cares for extra seat stability.

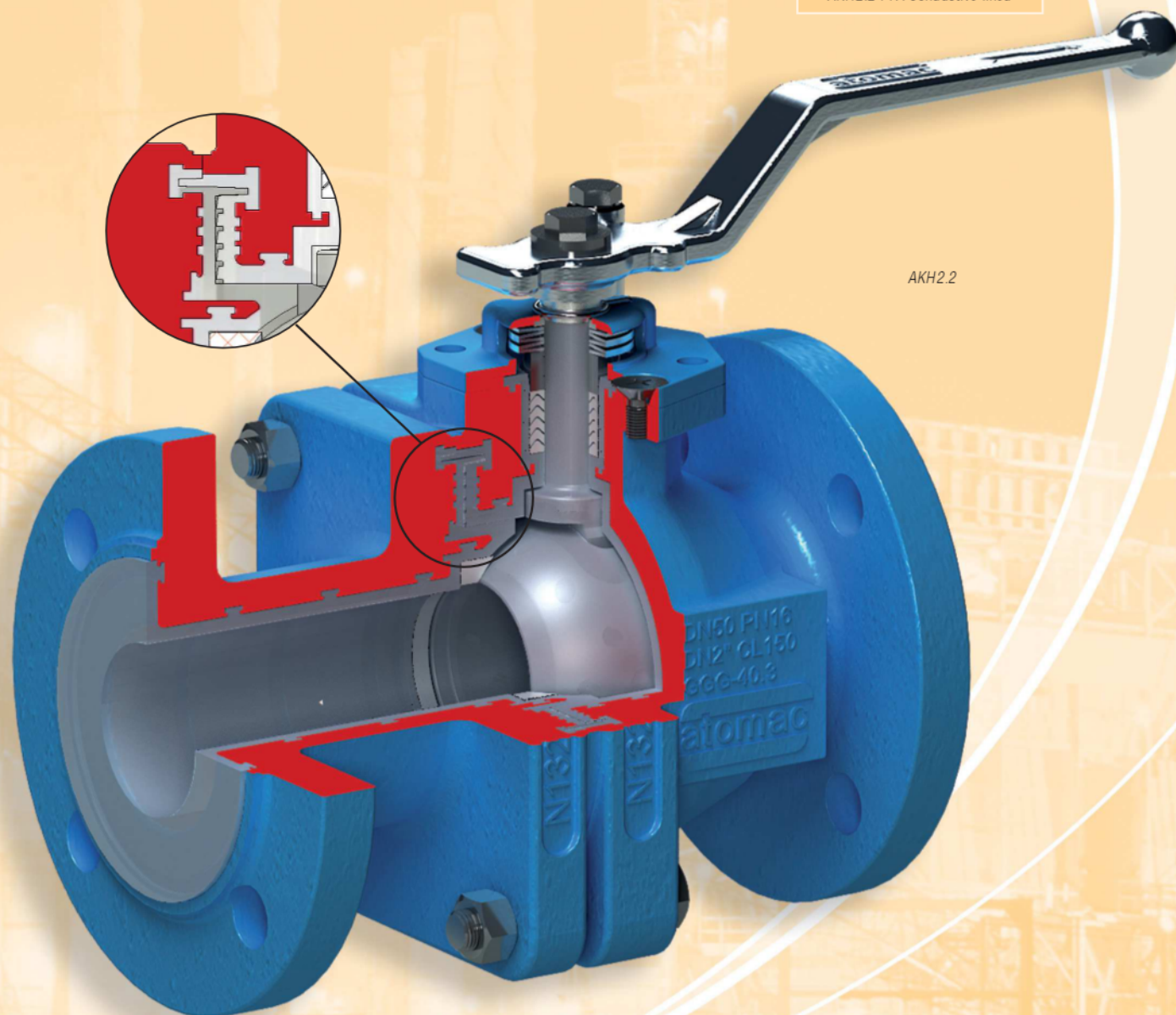
* Also available with FEP, PFA, Tefzel, PP, PVDF and PFA-conductive liner materials as well with a V-ball for precise modulating control service or with C-ball available.



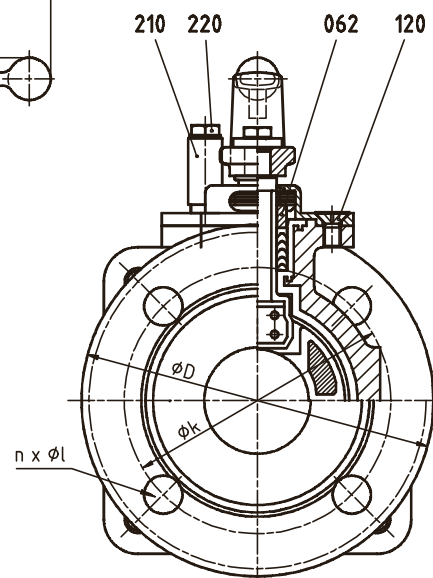
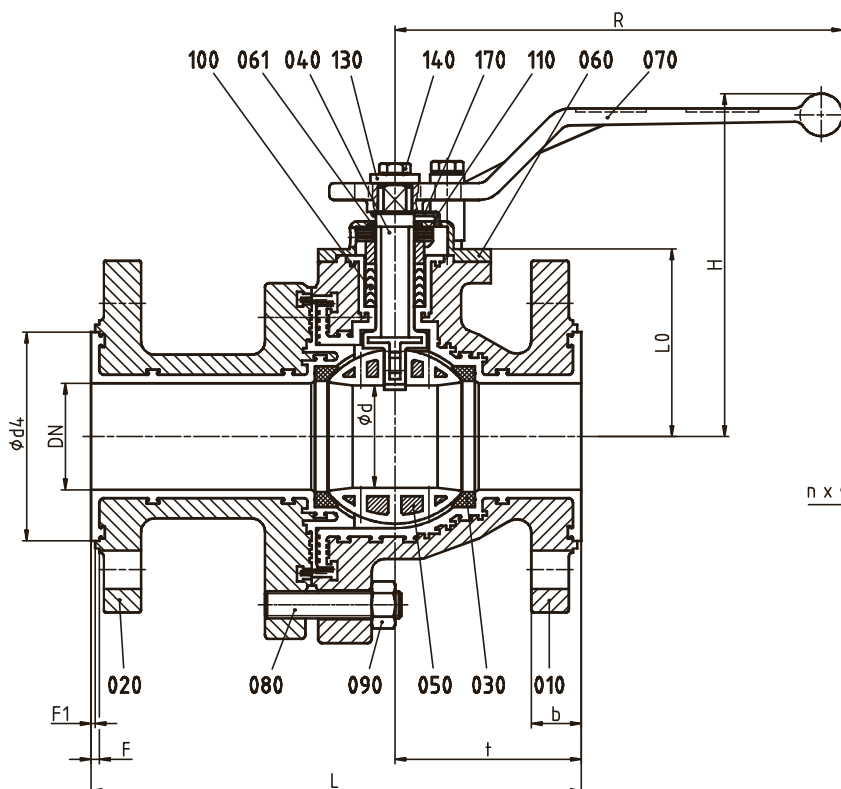
AKH2.2 with ceramic ball



AKH2.2 PFA-conductive lined



AKH2.2



NICHT ÜBERWACHTE AUSGABE
UNCONTROLLED COPY

Parts List

item	description	material	material no.:
010	body	GGG-40.3, PFA / FEP°, lined	0.7043
020	side piece	GGG-40.3, PFA / FEP°, lined	0.7043
030	seat ring	PTFE	
040	stem	X 2 CrNiMoN 22 5 3, PFA	1.4462
050	ball (½"-2")	GX 38 CrMo V 5-1, PFA / FEP°, lined	1.2343
050	ball (3"-4")	GGG-40.3, PFA / FEP°, lined	0.7043
060	top cap	G-X 6 CrNi 18 9	1.4308
061	insert	PTFE	
062	distance ring	X 12 CrMoS 17	1.4104
070	hand lever (½"-2")	GB ZnAl4Cu 1 (galvanited)	2.2141
070	hand lever (3"-4")	GTW-40-05 (galvanited)	0.8040
080	stud bolt	X 5 CrNi 18 10	1.4301-K70
090	hexagon nut	X 5 CrNi 18 10	1.4301-K70
100	packing material	PTFE	
110	belleville washer	X 12 CrNi 17 7	1.4310
120	countersunk screw	X 5 CrNi 18 10	1.4301
130	lock washer	X 5 CrNi 18 10	1.4301
140	hexagon bolt	X 5 CrNi 18 10	1.4301
170	grounding device (1", 2"-4")	X 12 CrNi 17 7	1.4310
170	curved spring washer (½", ¾", 1½")	X 5 CrNi 18 10	1.4301
210	stop	ST 37.2 (galvanited)	1.0037
220	hexagon bolt	X 5 CrNi 18 10	1.4301

° optional

Dimensions

DN	L	t	b	F	F1	ϕd_4	ϕd
½"	130	59,5	15	3	1,5	36	15
¾"	150	69,5	16	3	1,5	43	20
1"	152,4	65,5	17	4	2	51	24
1½"	178	79	19,5	4	2	73	38
2"	203	87,5	21,5	4	2	98	50
3"	241	118	26,5	4	2	127	80
4"	292	140	30,5	4	2	157	100

Dimensions

DN	LO	H	R	$n \times \phi l$	ϕk	ϕD	weight kg
½"	52,5	120	160	4x16	60,5	88,9	4,3
¾"	52,5	120	160	4x16	70	98,5	4,6
1"	54	123	160	4x16	79,2	107,9	5,0
1½"	75	145	210	4x16	98,5	127	8,4
2"	88	160	210	4x19	120,5	152,4	12,8
3"	134	207	313	8x19	152,5	190,5	29,1
4"	149	220	313	8x19	190,5	228,6	43,5

DN 3", DN 4" octagonal

Datum: 04.12.2001

Gezeichnet: *M. Elsbernd*

Geprüft: *W. Kreutlich*