

Type DSS9 Quick Connect Diaphragm Seal with Tri-Clamp connection according to ISO 2852



FEATURES

- 316L stainless steel diaphragm welded to a 316L stainless steel top housing.
- Fill/bleed connection
- Top housing and pressure instrument removable from process.
- Helium leak tested

APPLICATIONS

- Pharmaceutical
- Dairy, food processing
- Bio-technology, filtration
- Breweries, distilleries, wineries and citrus juice production

PRODUCT INFORMATION

- The 3/4", 1" and 1 1/2" Type DSS9 is for use on most 63 mm and smaller size gauges; the 2" and larger -Type DSS9 can be attached to gauges up through 100 mm size.
- Quick-connect nuts, gaskets or bottom housings are not supplied.
- Can be used with pressure gauges, switches and transducers.
- Maximum operating pressure and temperature are determined by the gaskets and clamping devices, used in the piping system, by the instrument range and by the fill fluid.

SPECIFICATIONS

Maximum Pressure Rating

PN16/PN40 for DN 3/4" ... DN 2"
 PN10/PN25 for DN 2-1/2" and DN 3"

Top Housing material

Stainless Steel 1.4435 (316L)

Diaphragm Materials

Stainless Steel 1.4435 (316L),

Instrument Connection Sizes

G 1/2 female

Process Connections

3/4" up to 3"

Surface Roughness of wetted parts

Ra < 0,8 µm, optional Ra < 0,4 µm
 or electro polished

Helium leak test

10⁻⁹ mbar l/s

Accuracy (typical)

Seal will add 0,5 % to the stated full scale accuracy of the instrument attached.

Standard Fill Medias

Glycerin

Silicone

Neobee M20

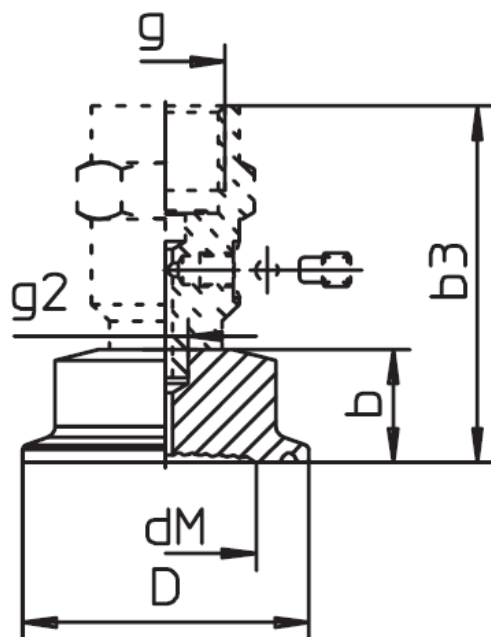
White oil silicone free

*Others available upon request

OPTIONS

- DU - Welded instrument connection
- BP - Electro polished 0,5 AARH
- 6W - Cleaned for oxidizing processes other than Oxygen
- YF - Cleaned silicone free product
- C3 - Material certificate EN 10204 3.1

General dimensions in mm



DN	PN	b	b3	D	dM	g	g2	Minimum span	Weight [kg]
3/4"	16/40	20	63	25,4	16	G 1/2	Ø 8	4 bar	0,18
1"				50,5	21			2,5 bar	0,33
1 1/2"				64	30			1 bar	0,45
2"				77,5	52			0,6 bar	0,58
2 1/2"	10/25	20	63	91	66	G 1/2	Ø 8	0,6 bar	0,76
3"									

Order information

Process connection	Seal type	Diaphragm material	Housing material	Instrument connection	Pressure rating	Fill fluid	Options
(75) 3/4" (10) 1" (15) 1 1/2" (20) 2" (25) 2 1/2" (30) 3"	DSS9	(S) Stainless steel 1.4435 (316L) (St) Stainless steel 1.4435 (316L) PTFE coated	(S) Stainless steel 1.4435 (316L)	(51T) G 1/2 female	PN40 PN25	(CG) Glycerin (Direct mounting, -18/204 °C, 0/400 °F, not for vacuum or compound ranges) (CK) Silicone (Direct mounting or with capillary line ≤ 10' (3 m), -40/315 °C, -40/600 °F) (NM) Neobee M20 (Direct mounting or with capillary line ≤ 10' (3 m) -18/160 °C, 0/320 °F) (GQ) White oil silicone free (Direct mounting or with capillary line ≤ 10' (3 m) -10/260 °C, 14/500 °F)	(DU) Welded instrument connection (BP) Electro polished 0,5 AARH (6W) Cleaned for oxidizing processes other than Oxygen (YF) Cleaned silicone free (C3) Material certificate acc. to EN 10204 3.1

Order example

Process connection	Seal type	Diaphragm material	Housing material	Instrument connection	Pressure rating	Fill fluid	Options
20	DSS9	S	S	51T	PN40	GQ	C3

Ashcroft Instruments GmbH

Germany
 Max-Planck-Str. 1,
 D-52499 Baesweiler
 P.O. Box 11 20, D-52490 Baesweiler
 Tel.: +49 (0) 2401 808-0

France
 „206" ZA du Mandinet, 1/3 Rue des Cam-
 panules,
 F-77185 Lognes
 Tel.: +33 (0) 1 60 37 25 30

Website: www.ashcroft.eu

Ashcroft Instruments Ltd.
 Unit 17 & 18 William James House
 Cowley Road,
 Cambridge CB4 0WX
 Tel.: +44 (0) 12 23 39 55 00

e-Mail: sales@ashcroft.com

Ashcroft ISTANBUL
 Gayrettepe Mah. Yildiz Posta Cad.
 Yildiz Residence No:24 K:1 D:4
 34349 Besiktas -Istanbul
 Tel.: +90 (0)212 3270847