

QUICK COUPLING KSB INLET ST. ST. PLUG

ART. NO. 150062

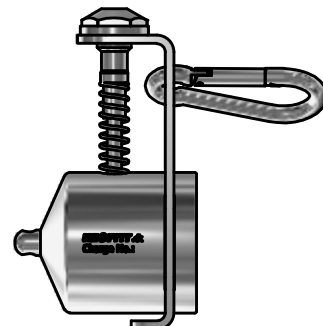
GENERAL



KEOFITT has the widest selection of spare parts and accessories to complete your sampling system.



Compatible to KEOFIT sampling bags.



FEATURES



Connection: KSB inlet



To be used with steel chain

CERTIFICATION*

· 3.1 Material Certificate

TECHNICAL DATA

Material (process contact)

Material (without process contact)

- | | |
|---------------|------------------------------------------|
| · Steel parts | AISI 316L (1.4404) |
| · Carabiner | Stainless Steel |
| · O-ring | Silicone, RED (#150830) |
| | · EU EC 1935/2004 · FDA CFR 21 §177.2600 |
| | · USP Class VI · ADI Free |

Surface Treatment

- | | |
|-----------|--------------------------------------|
| · Outside | Electropolished $R_a \leq 1.2 \mu m$ |
| · Inside | Electropolished $R_a \leq 0.5 \mu m$ |

Pressure & Temperature

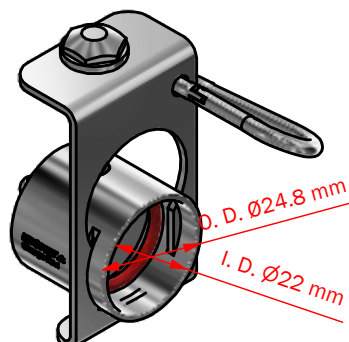
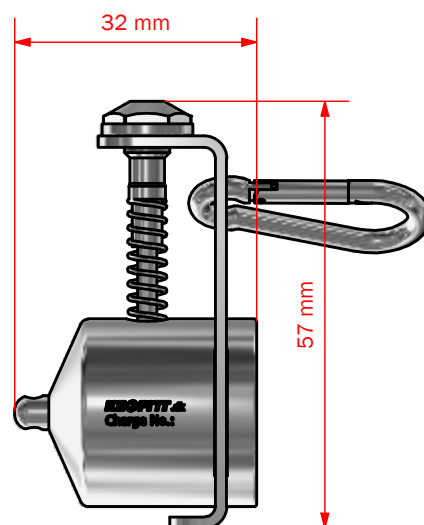
- | | |
|---------------|-----------------------------------|
| · Pressure | Depending on choice of valve head |
| · Temperature | Depending on choice of valve head |

Net Weight

- | | |
|----------|--------------------|
| · kg/lbs | 0.086 kg/0.189 lbs |
|----------|--------------------|

Spareparts

- | | |
|--------|--------------------------------|
| 150830 | 10 PACK O-RING SILICONE 16 x 3 |
|--------|--------------------------------|



*For further information and download please visit www.keofitt.dk

KEOFITT A/S reserves the right to change technical data without notice! Valid version of the data sheets is available on www.keofitt.dk.