

QUICK COUPLING M4 F/ O.D. 13,5/I.D. 5 MM

ART. NO. 400085

GENERAL



KEOFITT has the widest selection of spare parts and accessories to complete your sampling system



Fitting for ID 5 tubing

FEATURES



Connection: M4 hose piece



Outlet: Fitting for ID 4 tubing

CERTIFICATION

· QC: 3.1 Material Cert. · O-ring: FDA

TECHNICAL DATA

Material (product contact)

- -

Material (without product contact)

· Steel parts AISI 316L (1.4404)
· O-ring Silicone

Pressure & Temperature

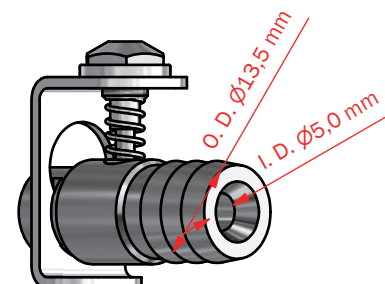
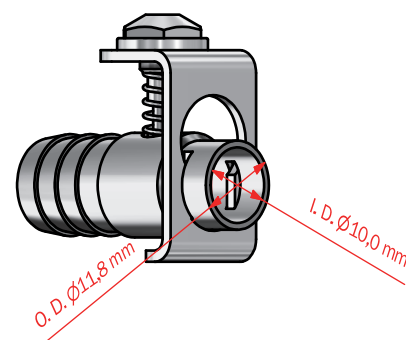
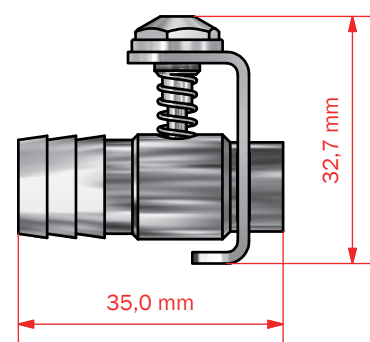
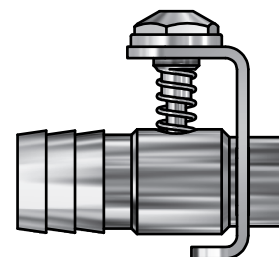
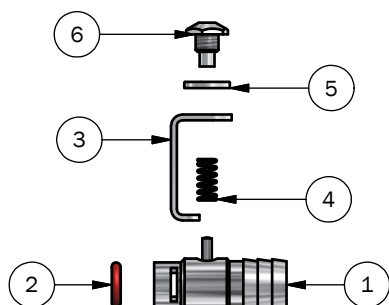
· Pressure Working pressure depends on choice of valve head
· Temperature Working temp. depends on choice of valve head

Net Weight

· Kg/lbs 0,036 kg / 0,08 lbs

Spareparts

400830 O-ring
-
-



PART LIST

ITEM	QTY	PART NUMBER	TITLE	MATERIAL
1	1	400185	QUICK COUPLING Ø13,5 / Ø5, BODY	AISI 316L (W1.4404)
2	1	400830	10 PACK O-RING 5,3 x 2,4 SILICONE FDA	Silicone (red)
3	1	400181	CLIP FOR QUICK COUPLING	AISI 316L (W1.4404)
4	1	400480	SPRING FOR QUICK COUPLING M4	AISI 316L (W1.4404)
5	1	400831	WASHER FOR QUICK COUPLING M4/W9	AISI 316L (W1.4404)
6	1	400188	SCREW FOR QUICK COUPLING M4	AISI 316L (W1.4404)