

# QUICK COUPLING W9 FOR SYRINGE/INJECTION

ART. NO. 900045

## GENERAL



KEOFITT has the widest selection of spare parts and accessories to complete your sampling system



Compatible with all KEOFIT sampling valves with W9 hose piece

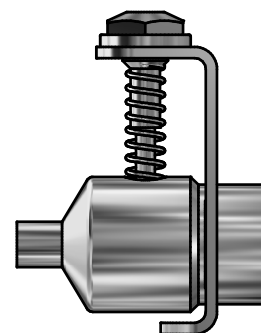
## FEATURES



Connection: W9 hose piece in-/outlets



Outlet: Fitting for syringe/injection (# 900082)



## CERTIFICATION\*

- Steel parts: · 3.1 Material Certificate
- O-ring: · EU EC 1935/2004 · EU EC 2023/2006 · DK No.822 06/2013 · FDA CFR 21 §177.2600 · REACH · RoHS
- ADI Free · TSE/BSE Free

## TECHNICAL DATA

### Materials

- Steel parts: AISI 316L (1.4404)
- O-ring: Silicone (714177)

### Surface

- Outside: Electropolished
- Inside: Ra ≤ 0.5 µm (Quick Coupling only)

### Pressure & Temperature

- Pressure: 0 - 12 bar / 0 - 174 psi
- Temperature: 1 - 150°C / 34 - 302°F

### Net Weight

- kg/lbs: 0,046 kg / 0,101 lbs

### Spareparts

- 800830: 10 PACK O-RING SILICONE 10,3 x 2,4 FDA

