



# ***NAMUR 1/4 & 1/2 High Flow valves for actuator control***

Catalogue 4921/GB



## INDEX

General Information .....	page 2
G 1/4 Series .....	page 4
G 1/2 Serie .....	page 6
Accessories .....	page 8

## TECHNICAL DATA

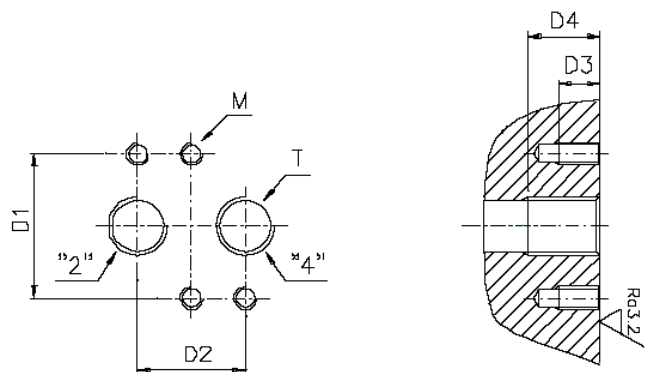
<b>Function :</b>	3/2 , 5/2 and 5/3 solenoid and air operated valves.
<b>Manual override :</b>	Standard on all solenoid operated versions
<b>Design :</b>	Pilot operated spool valve with combined pneumatic and spring return
<b>Mounting :</b>	For direct mounting on NAMUR interface
<b>Mounting position :</b>	Indifferent.
<b>Material specifications :</b>	Aluminium body. Internal parts from stainless steel. Sealing material from NBR
<b>Range of admissible pressure drop :</b>	$\Delta p$ min. = see table $\Delta p$ max. = 10 bar
<b>Media :</b>	Dry or lubricated air
<b>Fluid temperature :</b>	Min. 0 °C. Max. + 50 °C.
<b>Ambient temperature :</b>	-10 °C to +50 °C.
<b>Electrical part :</b>	Miniature coil 496131 (3W) encapsulated in synthetic material. Connection with 3-pin DIN 43650 type B plug. Degree of protection IP 65.
<b>Solenoid duty :</b>	100% ED
<b>Voltage :</b>	12 VDC , 24 VDC , 48 VDC , 24/50 AC , 110/ 50 AC , 230/50 AC
<b>Voltage tolerance :</b>	$\pm 10\%$ of nominal
<b>Class of insulation material :</b>	Class F for 496131 coil.

## Applications

- 3- or 4-way directional valves for the control of single – or double acting pneumatic actuators
- The interface design corresponds to the NAMUR standard and the VDI/VDE 3845 recommendations of the actuator industry and permits a compact design of the actuator/valve unit.

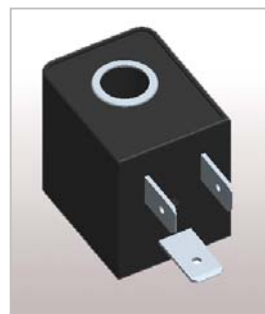
## NAMUR Interfaces

T	D1 mm	D2 mm	D3 mm	D4 min. Mm	M mm
1/4	32	24	8	12	M5
1/2	45	40	10	16	M6



## Coils

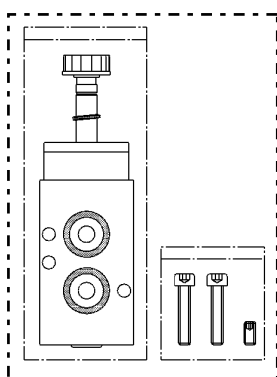
Voltage	Description	Order No.
12VDC	22mm standard coil	496131 C1
24VDC	22mm standard coil	496131 C2
48VDC	22mm standard coil	496131 C4
24/50AC	22mm standard coil	496131 A2
110/50AC	22mm standard coil	496131 A5
230/50AC	22mm standard coil	496131 F4



## How to order

Valve reference No. \* - Coil reference – Voltage code = order code

\* includes mounting kit for coil assembly + 2x NAMUR O-rings + 2 mounting screws and positioning dowel



+



= order code

Example: 341 N 03 + 496131C2 = 341N03-496131C2

Valves and coils may also be ordered separately

## Spare Parts

### • Spare Housing

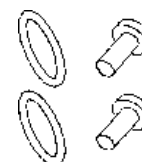
Plastic nut with O-ring      Order No. 3125  
Maximum torque 0.5 Nm



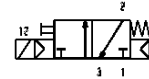
### • Spare part mounting kit

**For G 1/4 models - Order No. 496132**      Spare part kit includes:  
2 screws DIN912 M5x25 A2, 1 pin DIN 913 M5x10 A2, 2 O-rings NBR 15x2.5

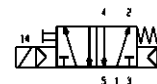
**For G 1/2 models - Order No. 496133**      Spare part kit includes:  
2 screws DIN912 M6x35 A2, 1 pin DIN 913 M6x12 A2, 2 O-rings NBR 24x3



Port size	Orifice	Q <sub>N</sub>	Admissible differential pressure [bar]			Max. admissible fluid temperature [°C]	Seat disc	Reference N°		Power consumption		Weight [g]	Dim. ref.
			max			Min. = 0 °C				[Watt]			
G	mm	L/min	min	DC=	AC~	Air & Neutral gases		Valve	Coil	DC	AC		

**3/2 Pilot operated valve - Internal pressure supply**

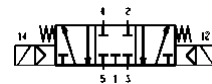
1/4	7	1250	1.5	10	10	50	NBR	<b>331N03</b>	496131	3	3	300	1
-----	---	------	-----	----	----	----	-----	---------------	--------	---	---	-----	---

**5/2 Pilot operated valve - Internal pressure supply**

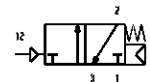
1/4	7	1250	1.5	10	10	50	NBR	<b>341N03</b>	496131	3	3	300	2
-----	---	------	-----	----	----	----	-----	---------------	--------	---	---	-----	---

**5/2 Control by 2 solenoids and internal pressure supply**

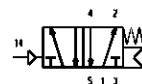
1/4	7	1250	1.5	10	10	50	NBR	<b>347N03</b>	496131	3	3	430	3
-----	---	------	-----	----	----	----	-----	---------------	--------	---	---	-----	---

**5/3 Control by 2 solenoids and internal pressure supply  
Closed in centre position**

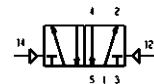
1/4	7	1250	1.5	10	10	50	NBR	<b>342N03</b>	496131	3	3	430	4
-----	---	------	-----	----	----	----	-----	---------------	--------	---	---	-----	---

**3/2 Externally operated valve - External pressure supply 2.5 to 10 bar**

1/4	7	1250	2.5	10	10	50	NBR	<b>531N03</b>	496131	-	-	210	5
-----	---	------	-----	----	----	----	-----	---------------	--------	---	---	-----	---

**5/2 Externally operated valve - External pressure supply 2.5 to 10 bar**

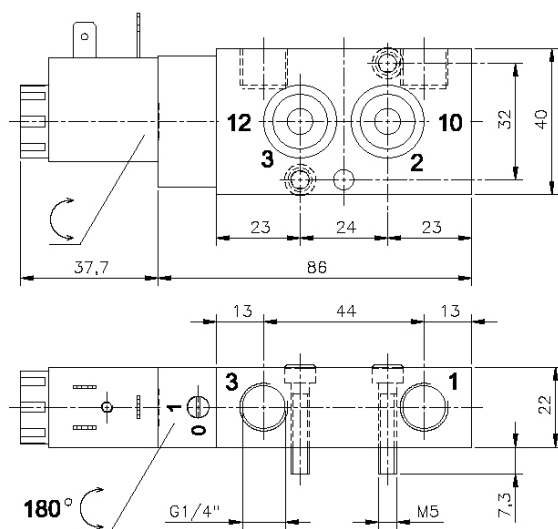
1/4	7	1250	2.5	10	10	50	NBR	<b>541N03</b>	496131	-	-	210	6
-----	---	------	-----	----	----	----	-----	---------------	--------	---	---	-----	---

**5/2 Externally operated valve – 2x External pressure supply 2 to 10 bar**

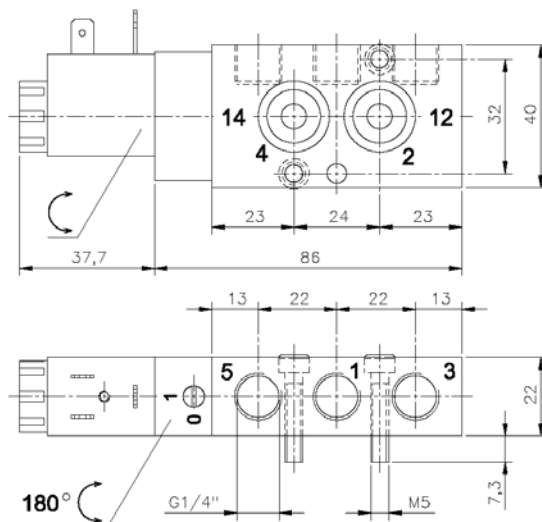
1/4	7	1250	1.5	10	10	50	NBR	<b>547N03</b>	496131	-	-	240	7
-----	---	------	-----	----	----	----	-----	---------------	--------	---	---	-----	---

**5/3 Externally operated valve – 2x External pressure supply 3 to 10 bar  
Closed in centre position**

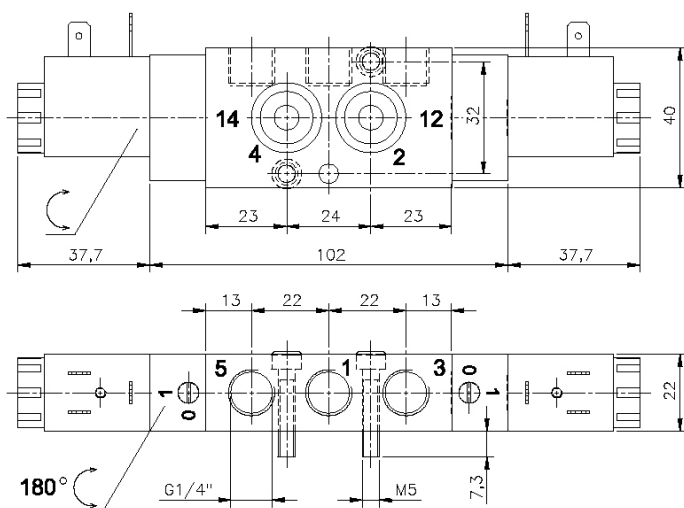
1/4	7	1250	1.5	10	10	50	NBR	<b>542N03</b>	496131	-	-	210	8
-----	---	------	-----	----	----	----	-----	---------------	--------	---	---	-----	---



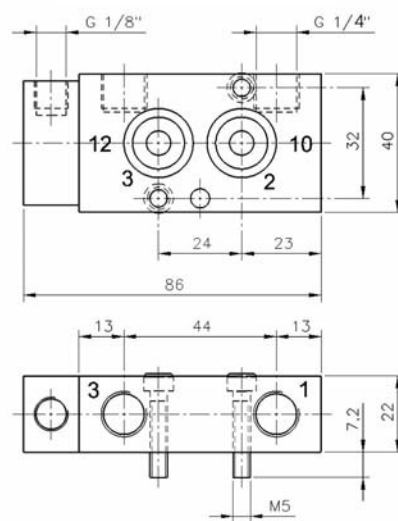
Dimension ref. 1



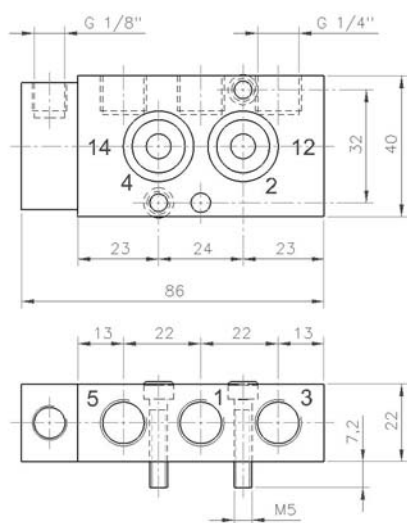
Dimension ref. 2



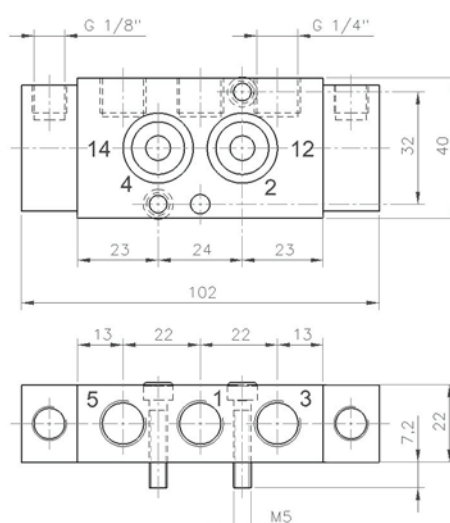
Dimension ref. 3 &amp; 4



Dimension ref. 5

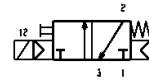


Dimension ref. 6

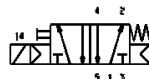


Dimension ref. 7 &amp; 8

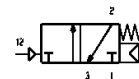
Port size	Orifice	$Q_N$		Admissible differential pressure [bar]		Max. admissible fluid temperature [°C] Min. = 0 °C	Seat disc	Reference N°		Power consumption [Watt]		Weight [g]	Dim. ref.
				max									
G	mm	L/min	min	DC=	AC~	Air & Neutral gases		Valve	Coil	DC	AC		

**3/2 Pilot operated valve - Internal pressure supply**

1/2	12	3000	1.5	10	10	50	NBR	<b>331N04</b>	496131	3	3	720	9
-----	----	------	-----	----	----	----	-----	---------------	--------	---	---	-----	---

**5/2 Pilot operated valve - Internal pressure supply**

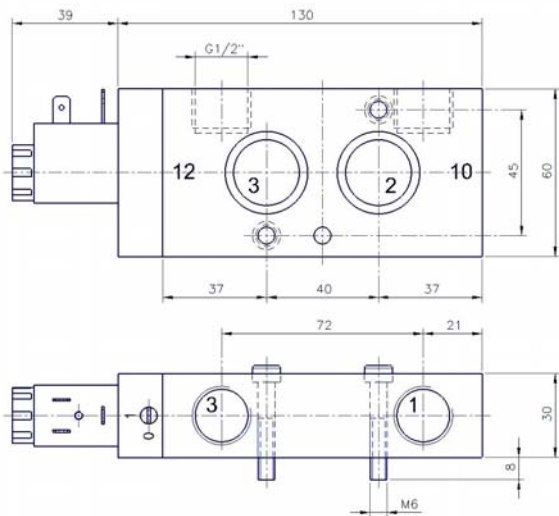
1/2	12	3000	1.5	10	10	50	NBR	<b>341N04</b>	496131	3	3	700	10
-----	----	------	-----	----	----	----	-----	---------------	--------	---	---	-----	----

**3/2 Externally operated valve - External pressure supply 2.5 to 10 bar**

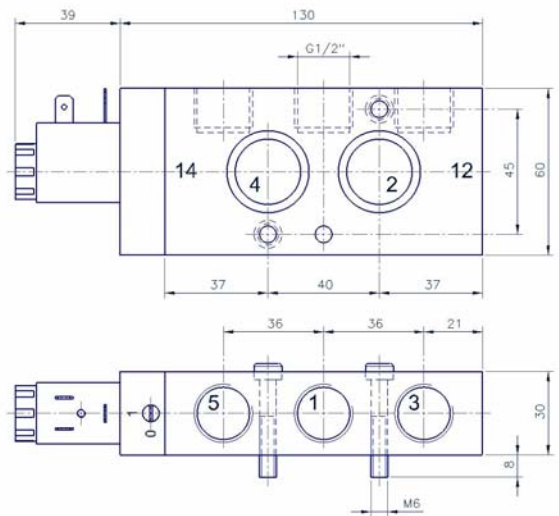
1/2	12	3000	2.5	10	10	50	NBR	<b>531N04</b>	496131	-	-	620	11
-----	----	------	-----	----	----	----	-----	---------------	--------	---	---	-----	----

**5/2 Externally operated valve - External pressure supply 2.5 to 10 bar**

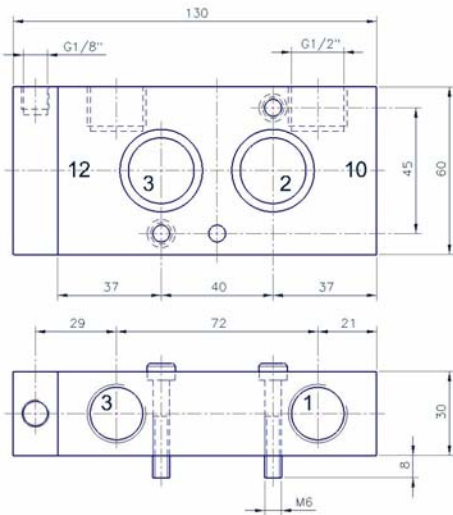
1/2	12	3000	2.5	10	10	50	NBR	<b>541N04</b>	496131	-	-	600	12
-----	----	------	-----	----	----	----	-----	---------------	--------	---	---	-----	----



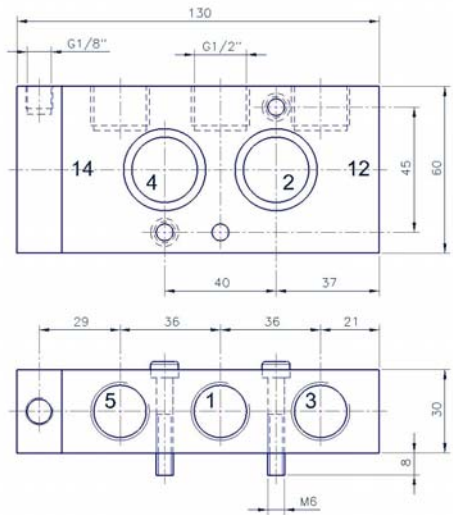
Dimension ref. 9



Dimension ref. 10



Dimension ref. 11



Dimension ref. 12



---

**Parker Lucifer SA**  
Fluid Control Division Europe  
16, Ch. du Faubourg de Cruseilles  
CH-1227 Carouge-Geneva - Switzerland  
Tel. +41 22 3077 111 Fax +41 22 3077 110  
[www.parker.com/lucifer](http://www.parker.com/lucifer)

Catalogue  
4921/GB  
November 2005