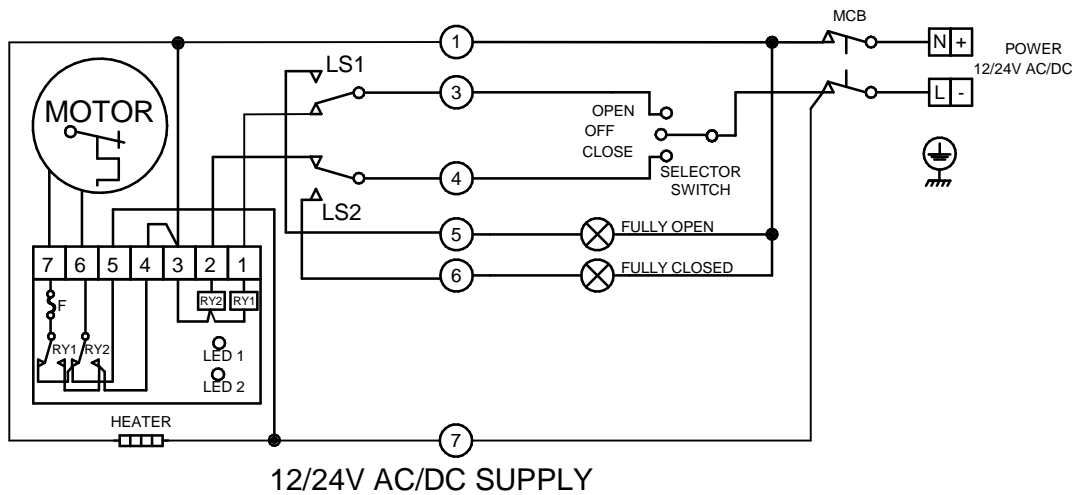



CIRCUIT IS DRAWN FOR A VALVE IN THE FULLY CLOSED POSITION

ACTUATOR SHOWN IN MID-TRAVEL

TYPICAL CONTROL - NOT ROTORK SUPPLY

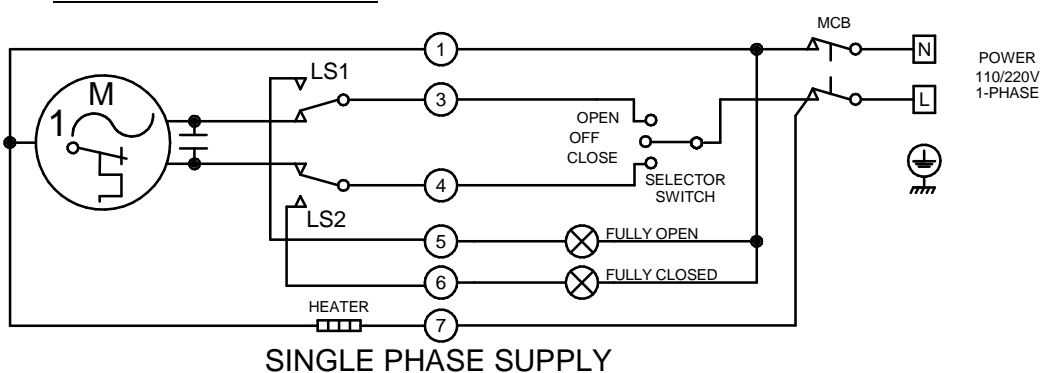


- O - OPEN
- C - CLOSE
- TS - TORQUE SWITCHES
- LS - LIMIT SWITCHES
- MCB - MINITURE CIRCUIT BREAKER
-  ACTUATOR TERMINAL

CAUTION
SOLID STATE LOGIC SYSTEMS USING
ACTUATOR SWITCH SIGNAL INPUTS MUST
BE DESIGNED TO PROVIDE A SWITCHING
LOAD OF 1 WATT & 24V MINIMUM WITH A
TIME CONSTANT NOT LESS THAN 10ms
TO MINIMISE SENSITIVITY TO CONTACT
VIBRATION.

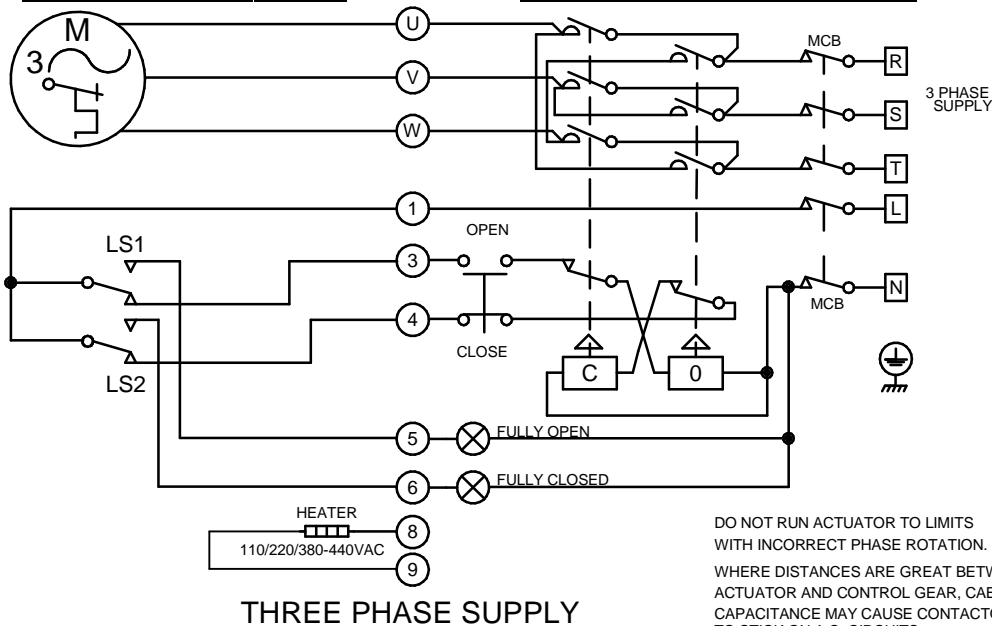
ACTUATOR SHOWN IN MID-TRAVEL

TYPICAL CONTROL - NOT ROTORK SUPPLY



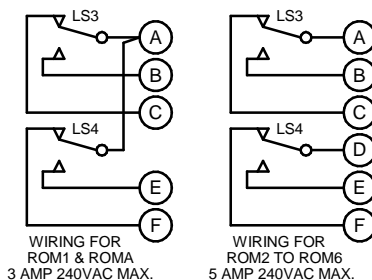
ACTUATOR SHOWN IN MID-TRAVEL

TYPICAL CONTROL - NOT ROTORK SUPPLY



DO NOT RUN ACTUATOR TO LIMITS
WITH INCORRECT PHASE ROTATION.

WHERE DISTANCES ARE GREAT BETWEEN
ACTUATOR AND CONTROL GEAR, CABLE
CAPACITANCE MAY CAUSE CONTACTORS
TO STICK ON A.C. CIRCUITS



<u>Iss</u>	<u>Date</u>	<u>Chkd</u>	<u>Revision Details</u>	www. rotork .com		BASIC + HEATER + LS3/LS4 -		
5	200613 HYE	PJW	Fully open/closed lamp circuit for three phase (5, 6) corrected, 380-440VAC added for HEATER, size updated (A,B,C,D,E,F).	ROTORK CONTROLS LTD BATH, BA1 3JQ ENGLAND Tel:01225-733200	ROTORK CONTROLS INC ROCHESTER NY 14624, USA Tel:585-247-2304	Drawn by: PJW Date : 170402 Base WD: -- Job No : -- MI No : --	Circuit Diagram No YS11-00	Issue No 5