

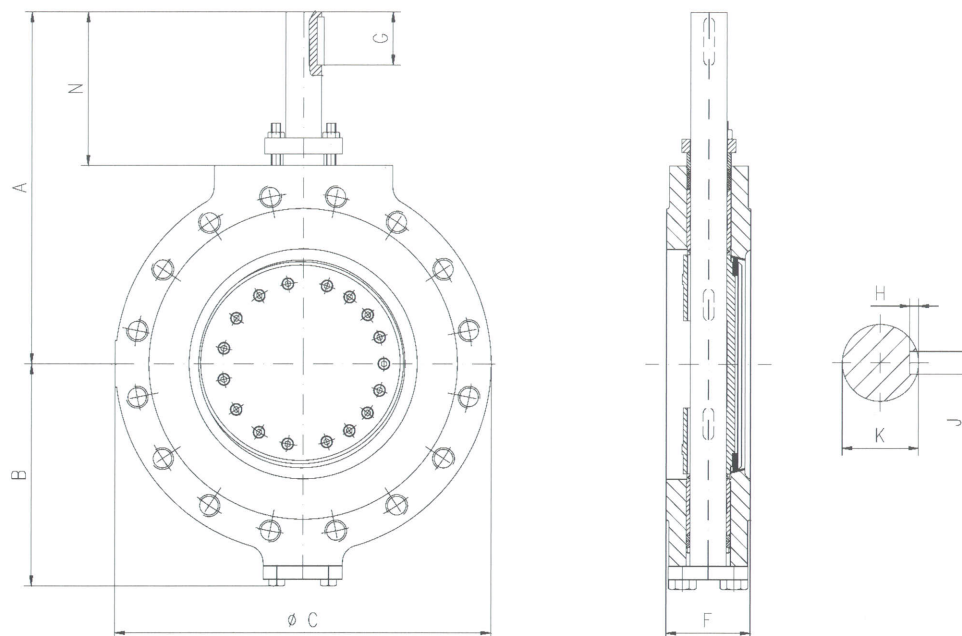
MODEL NUMBERS TRI-CON

Designation	Size	Pressure class	Body & Disc material	Shaft material	Packing	Lamination material	Execution	Operation
A1 = API 609 Lug Type Table 2	0050 = DN 50 = 2"	A = PN 10	A = GP240GH / P245GH	A = 1.4057 (SS431)	1 = Graphite	1 = Stainless Steel / Graphite	A = Standard	A = Bare Shaft
B1 = B16.10 Gate Valve Double Flange	0065 = DN 65 = 2.5"	B = PN 16	B = 1.4552 (CF8C)	B = 1.4571 (SS316Ti)	2 = PTFE	2 = Stainless Steel Solid Laminates	B = Inconel Seat	E = Electrical Actuator
I1 = ISO 5752 Double Flange	0080 = DN 80 = 3"	C = PN 25	C = 1.4571 (SS316Ti)	C = 1.4980 (AISI660)	3 = Kalrez	3 = Stainless Steel / PTFE	C = Flange with Groove	G = Gear
W1 = Water type API 609	0100 = DN 100 = 4"	D = PN 40	D = 1.4408	D = Duplex	4 = Special	4 = Hastelloy / Graphite	D = High Cycle Bearing	H = Hydraulic Actuator
D1 = EN 558 R13/R14 (DIN 3202 / F16 / F4) Double Flange	0125 = DN 125 = 5"	E = PN 63	E = 1.4301 (SS304)	E = 1.4301 (SS304)	5 = Graphite / Live-Loading	5 = Special	E = Sealed Bearing	I = Gear with Switch Box
F1 = EN 558 R14 (DIN 3202 / F4) Double Flange	0150 = DN 150 = 6"	F = PN 100	F = 1.4307 (SS304L)	F = 1.4307 (SS304L)	6 = PTFE / Live-Loading	6 = Duplex / Graphite	F = Stellite Seat	M = Mounting Bracket
L1 = EN 558 R16 (DIN 3202 / K3) Lug Type	0200 = DN 200 = 8"	G = PN 160	G = 1.7357 (WC6)	G = 1.4923	7 = 02-Graphite	7 = Inconel / 02-Graphite	G = Blow out proof shaft acc. API 609 for DIN Valves	P = Pneumatic Actuator
S1 = EN 558 R14 (DIN 3202 / F4) Buttweld / Fabricated	0250 = DN 250 = 10"	H = PN 250	H = Hastelloy	H = Hastelloy	8 = 02-Graphite / Live-Loading	8 = Hastelloy	H = Combination E + F	Q = Electrohydraulic Actuator
S2 = EN 558 R14 (DIN 3202 / F4) Buttweld / Casting	0300 = DN 300 = 12"	I = PN 6	I = Inconel	I = Inconel	9 = EPAGRAPH	9 = Duplex	I = Combination D + F	S = Special
WD = EN 558 R16 (DIN 3202 / K3) Water Type	0350 = DN 350 = 14"	J = JIS Standard	J = Duplex	J = 1.4401 / 1.4404 (SS316/316L)		0 = Inconel	J = Combination D + F & HT-Bolting	L = Low Temperature Gear
WS = EN 558 R20/R25 (DIN 3202 / K1/K2) Wafer Type	0375 = DN 375 = 15"	X = ANSI 150	K = 1.4401 / 1.4404 (SS316/316L)	K = 1.4541 (SS321)		A = Monel / 02-Graphite	K = Combination D + F + HT-Bolting + Extension	T = High Temperature Gear
LS = EN 558 R20/R25 (DIN 3202 / K1/K2) Lug Type	0400 = DN 400 = 16"	Y = ANSI 300	L = 1.4220 / P355NL	M = Monel K500		B = Bronze / Graphite	L = Body Extension	O = 02- Gear
DB = Double Block and Bleed	0450 = DN 450 = 18"	Z = ANSI 600	M = Monel	N = Nitronics 50		C = Monel	M = Sealed bearing + NACE	N = Offshore Gear
CF = EN 558 R14 (DIN 3202 / F4) Flanged Check Valve	0500 = DN 500 = 20"	W = ANSI 900	N = C5 Body & SS Disc	P = 17-4 PH / 1.4542		D = Superduplex / Graphite	N = NACE	R = Gear with Padlock Flange
CS = EN 558 R14 (DIN 3202 / F4) Buttweld Check Valve	0600 = DN 600 = 24"	V = ANSI 1500	O = 02 Brass	Q = Superduplex			O = Steam Jacket	
FA = EN 558 R14 Double Flange with ANSI Connection	0650 = DN 650 = 26"	S = Special	P = C95800 / C95500	U = 1.4536-39 (904/904L)			P = Sealed bearing + Steam Jacket	
	0700 = DN 700 = 28"		Q = Superduplex	S = Special			Q = Sealed bearing + Steam Jacket + NACE	
	0750 = DN 750 = 30"		R = 16Mo3 / 1.5415 / G20Mo65 / 1.5419				R = Flange with Recess	
	0800 = DN 800 = 32"		S = Special				S = Special	
	0900 = DN 900 = 36"		T = 1.4827				T = HT-Bolting	
	1000 = DN 1000 = 40"		U = 1.4859				U = Combination L & T	
	1050 = DN 1050 = 42"		V = SS / 02 Brass				V = Shaft Extension	
			W = WC9				W = Combination T + V	
			X = LCB				X = Combination L + N + T	
			Y = CF8M					
			Z = WCB / A516Gr.70					
			1 = 1.4536-39 (904/904L)					
			3 = CF3					
			4 = CF3M					
			5 = C5					
			6 = C12					
	2200 = DN 2200 = 88"		8 = CF8					

TRI-CON

MODELL / MODEL L1 (ANFLANSCH / LUG TYP EN 558 R16 / DIN 3202 K3)

ABMESSUNGEN UND GEWICHTE / DIMENSIONS AND WEIGHTS DN 50 – DN 900 /
PN 10 – 40 FREIES WELLENENDE / BARE SHAFT



ABMESSUNGEN / DIMENSIONS IN MM

DN Size	50 2"	65 2 1/2"	80 3"	100 4"	125 5"	150 6"	200 8"	250 10"	300 12"	350 14"	400 16"	450 18"	500 20"	600 24"	700 28"	800 32"	900 36"
A	210	231	231	242	272	290	376	417	436	528	578	628	670	757	904	978	1009
B	128	143	143	159	169	196	224	258	315	349	413	468	501	580	665	748	766
C (PN10)	165	200	200	225	250	292	345	400	452	516	575	640	670	780	910	1025	1115
C (PN16)	165	200	200	225	250	292	345	400	452	516	575	640	715	842	910	1025	1125
C (PN25)	165	200	200	225	270	292	367	440	502	567	620	685	740	842	960	1085	1185
C (PN40)	165	200	200	225	270	292	367	440	502	567	660	685	740	890	995	1140	1250
F	43	64	64	64	70	76	89	114	114	127	140	152	152	178	229	241	241
G	20	32	31	30	48	39	48	48	52	91	91	91	101	103	143	143	143
H	3	3,5	3,5	3,5	4	5	5	5	5,5	6	7	7,5	7,5	9	10	10	10
J	5	6	6	6	8	10	10	12	14	16	18	20	20	25	28	28	28
K	16	20	20	22	25	32	38	40	45	55	65	70	75	90	110	110	110
N	100	111	111	107	127	120	168	169	169	231	230	230	240	255	326	337	336

GEWICHTE / WEIGHTS IN KG

DN Size	50 2"	65 2 1/2"	80 3"	100 4"	125 5"	150 6"	200 8"	250 10"	300 12"	350 14"	400 16"	450 18"	500 20"	600 24"	700 28"	800 32"	900 36"
PN10	9	16	16	19	23	35	58	91	109	165	230	325	374	526	950	1113	**
PN16	9	16	16	19	23	35	58	91	109	165	230	325	374	600	950	1180	1540
PN25	9	16	16	19	23	35	58	101	125	188	285	361	402	600	1011	1300	**
PN40	9	16	16	19	23	35	63	101	125	188	291	390	402	752	**	**	**

** IN ABHÄNGIGKEIT VON DER SPEZIFIKATION / IN ACCORDANCE TO SPECIFICATION