

# X-stainless steel ball valves, reduced bore

230X series, x-series, welding / welding, EN (DIN), DN 10-50, reduced bore

Body	DN 10-50 Stainless steel, AISI316L (1.4404)
Ball	DN 10-50 Stainless steel, AISI316L (1.4404)
Ball seal	DN 10-50 PTFE+C
Stem	DN 10-50 Stainless steel, AISI316L (1.4404)
Stem seal	DN 10-50 FPM/NBR
Operation	DN 10-50 with composite handle



## Operation conditions

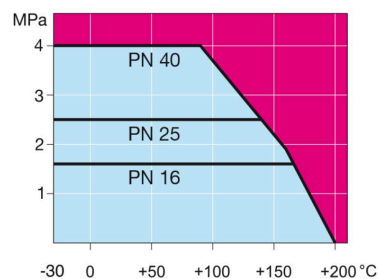
-20 ° – +200 °C

Below -20 °C contact manufacturer

Over +200 °C contact manufacturer

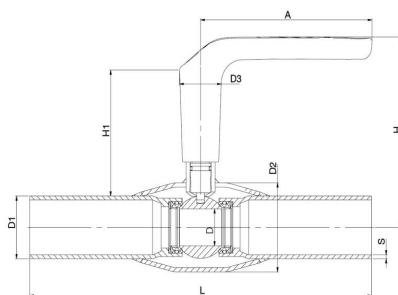
Lowest allowed ambient temperature -40 °C

Leakage rate A (EN 12266-1)



Not for steam

DN 10-50



DN	PN	Product no.	A	D	D1	D2	D3	H	H1	L	S	kg
10	40	230010X	130	10	17.2	33.7	32.0	119	86	230	2	0.5
15	40	230015X	130	10	21.3	33.7	32.0	119	86	230	2	0.5
20	40	230020X	130	15	26.9	42.4	32.0	123	87	230	2	0.6
25	40	230025X	130	20	33.7	48.3	32.0	125	86	230	2	0.8
32	40	230032X	130	25	42.4	60.3	32.0	129	85	260	2	1.2
40	40	230040X	130	32	48.3	70.0	32.0	133	87	260	2.6	1.7
50	40	230050X	130	40	60.3	76.1	32.0	140	88	300	2.6	2.4