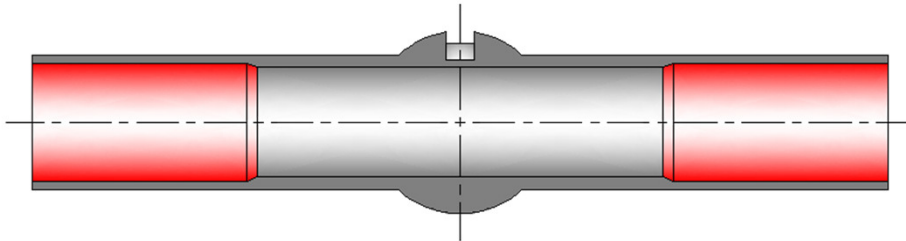
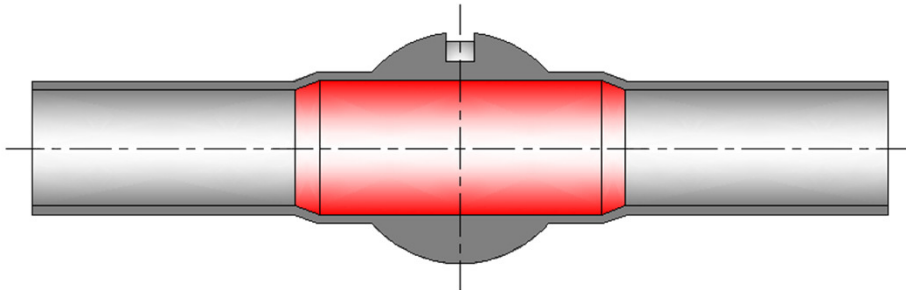


Tube Dimensions and Standards

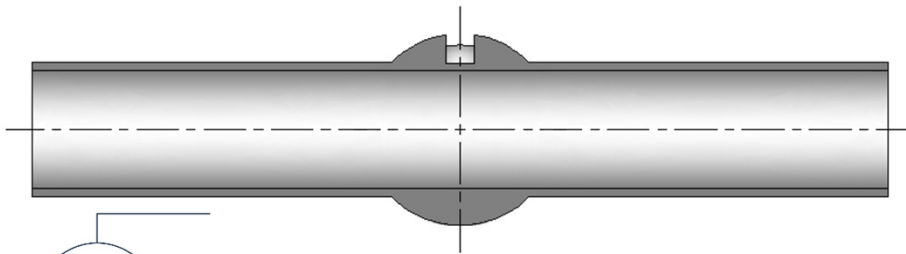
Tube – not Pipe!



- ❑ **A44** – Reduced bore valve has a smaller bore than the tube and therefore media would collect (puddle) either side of the valve



- ❑ **A59** – Full bore valve has a larger bore than the tube and therefore media would collect (puddle) within the valve



- ❑ **WK70** – CleanSafe has a bore equivalent to the tube so the media cannot settle (puddle) either side or within the valve and allows for self draining