



INTELLIGENT

I

DIGITAL

D

SENSORS

S



Free and connected – IDS goes Wireless!

WIRELESS MEASUREMENT OF pH, CONDUCTIVITY, DISSOLVED OXYGEN AND TURBIDITY



a xylem brand

IDS goes Wireless!

- No cables
- Securely connected
- Same module for all parameters

Unleash your sensors!

Put your wireless module on your IDS plug head sensor, confirm the connection - done! Put your module at your desired sensor or use a separate one for each of your sensors.



Start and save your measuring directly at the sensor!

No cables, no tugging, full flexibility in all areas where cables or meters would disturb, even under laboratory hoods or laminar flow benches.

Signal LED

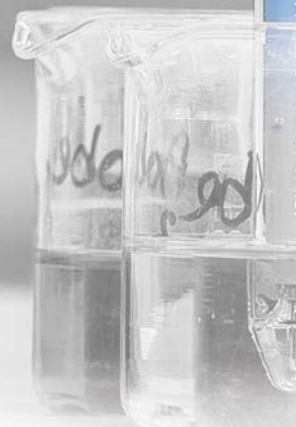
Key to start and save the measuring



Opening for electrolyte solution refilling (only pH electrodes with liquid electrolyte)

Smart meter module

The module at the meter works depending on its number of channels with up to three sensors simultaneously!





WLM-Charger

Wireless module
IDS WLM-S



Small is beautiful:

Cascadable USB charger for sensor modules. For charging of modules with or without electrode connected. Suitable for wall mounting!

Universal plug head

Complete kit:

WTW offers a kit consisting of wireless module for sensor and meter (one of each), USB charger and universal USB power supply.



Sensor head



Sensor shaft

Wireless module
IDS WLM-M



Suitable Sensors:

All WTW IDS sensors with plug head - you will find yours under www.WTW.com



Suitable Meters:

WTW's following IDS portable meters:

Our up-to-date IDS portable meters:

- MultiLine® Multi 3630 IDS
- MultiLine® Multi 3620 IDS
- MultiLine® Multi 3510 IDS

To measure wireless with the following older IDS portable meters please run the latest firmware updates:

- MonoLine 3310 IDS
- Multi 3310 IDS

All WTW IDS benchtop meters:

Our up-to-date IDS benchtop meters:

- inoLab® Multi 9630 IDS
- inoLab® Multi 9620 IDS
- inoLab® Multi 9310 IDS

To measure wireless with the following older IDS benchtop meters please run the latest firmware updates (*available within a short time - please contact us*):

- inoLab® Multi 9430 IDS (with restrictions)
- inoLab® Multi 9420 IDS (with restrictions)



Technical Data

Radio standard	Bluetooth LE
Range	About 10 m
Power supply	Re-chargeable LiPo battery 230mAh
Continuous operating times	IDS pH electrodes: 60 h IDS ORP electrodes: 60 h IDS Conductivity cells: 30 h (conductivity up to 1S) IDS FDO® sensor: 9 h IDS Turbidity sensor: 5 h
Signal	RGB LED
Protection class	IP 43

Ordering Information

Model	Description	Order no.
IDS WLM-S	Wireless module for plug head sensor	108 141
IDS WLM-M	Wireless module for IDS meter	108 142
WLM-Charger	USB charger for wireless modules	108 143
IDS WLM Kit	Kit consisting of wireless module for sensor and meter (one of each), USB charger and universal USB power supply	108 144
NT USB Universal	Universal USB power supply	902 872



WTW Wissenschaftlich-Technische Werkstätten GmbH

Dr.-Karl-Slevogt-Straße 1
D-82362 Weilheim
Germany

Phone: +49 881 183-0
Fax: +49 881 183-420
E-Mail: Info.WTW@Xyleminc.com
Internet: www.WTW.com

Quotations and Orders
Phone: +49 881 183-324
Fax: +49 881 183-411
E-Mail: Order.WTW@Xyleminc.com

Technical Information
Phone: +49 881 183-321
Fax: +49 881 183-425
E-Mail: TechInfo.WTW@Xyleminc.com

Repair Service
Phone: +49 881 183-325
Fax: +49 881 183-414
E-Mail: Service.WTW@Xyleminc.com